

CAVA CAVALLARO DEL SARTO
Bacino estrattivo di Giugnola/Piancaldoli
Comune di Firenzuola

PROGETTO DI VARIANTE IN AMPLIAMENTO
Art. 17 L.R. 35/2015

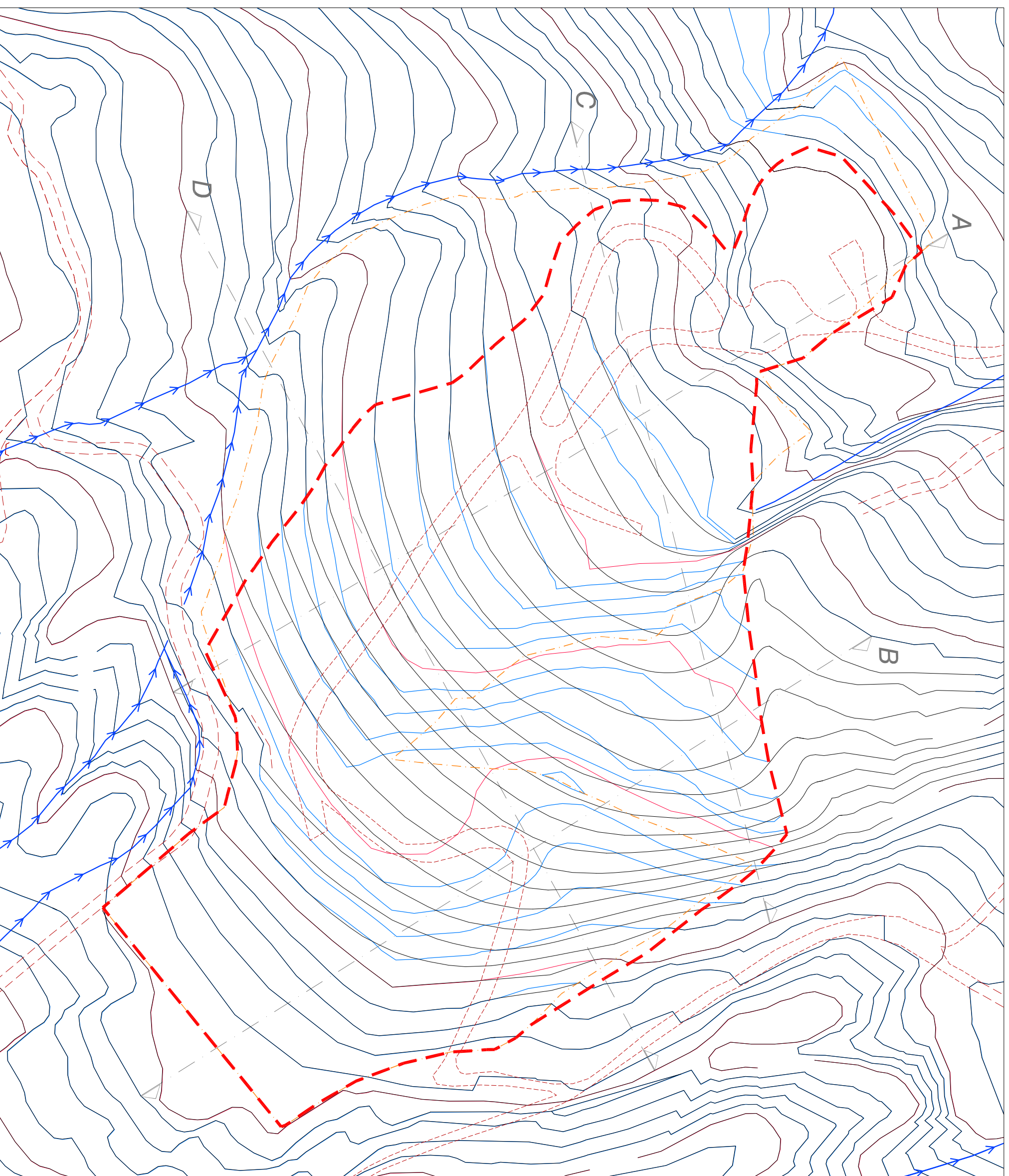
TAVOLA 6
PLANIMETRIA DI MASSIMO SCAVO










SCALA 1:1.000

PROGETTISTA
Dott. geol. Francesco Giannini
Dott. for. Luca Ghezzi

COMMITTENTE
Raspariti Pietra Serena S.r.l.

DATA Aprile 2022



-  Limite di intervento variante
-  Limite di intervento approvato
-  Curve di livello equidistanza 5 m - variante
-  Curve di livello equidistanza 1 - variante
-  Curve di livello equidistanza 5 m - approvato
-  Curve di livello equidistanza 1 - approvato
-  Strade di cantiere
-  Viabilità ordinaria
-  Traccia di sezione